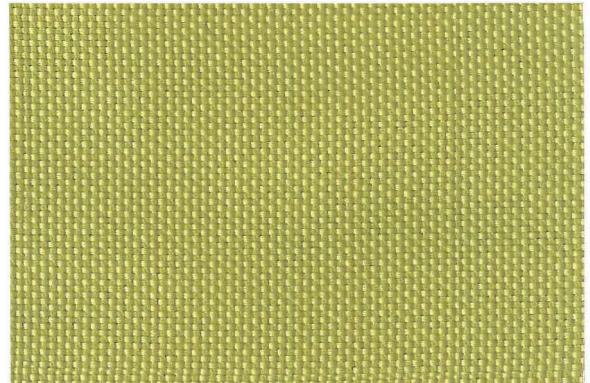
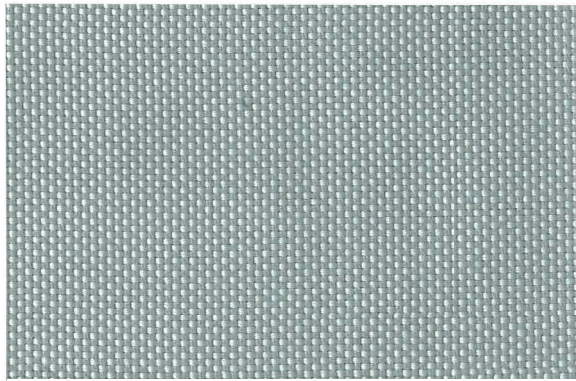


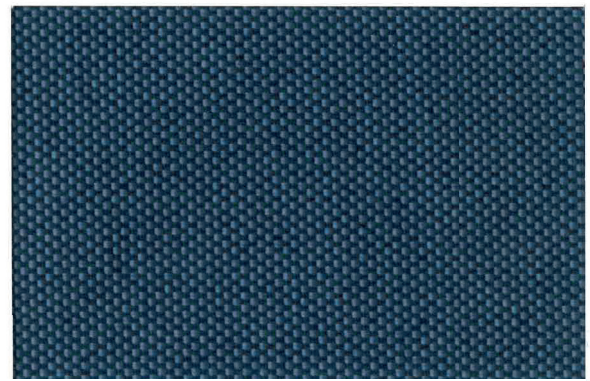
col. 01



col. 18



col. 56



col. 57

Artikel

Zusammensetzung

Breite

Gewicht

Flammschutz

Lichtechtheit

Pflege

SOLO

51% PES Trevira CS, 49% PES

300 cm

277 g/m²



IMO A 652- 16

DIN 4102- B1

BS5867 part 2 type B&C

BS5852 CRIB 5

EN 1021 1/2

ISO 105-B02

3-4

