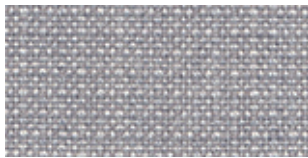


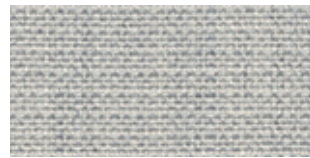
**CRISP™**

---

by Gabriel



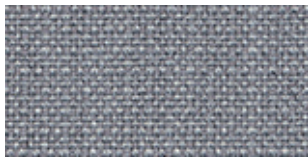
4033



4031



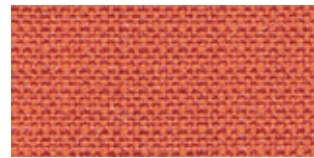
4711



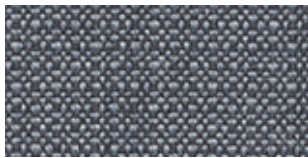
4021



4032



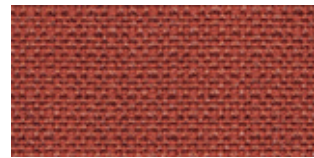
4430



4022



4115



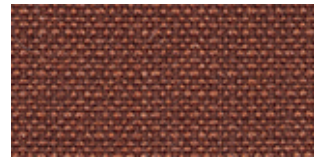
4302



4011



4701



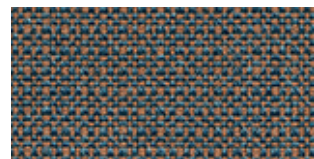
4301



4013



4123



4731



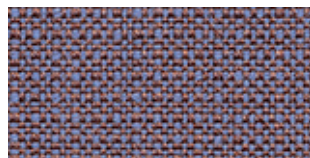
4712



4034



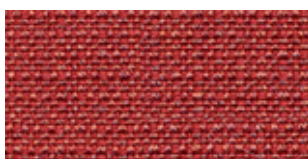
4431



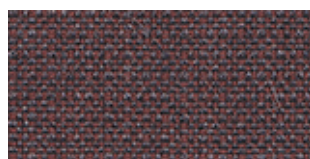
4702



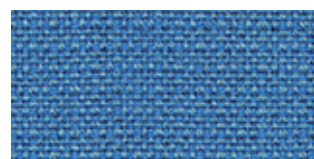
4604



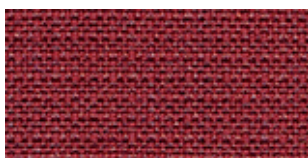
4432



4721



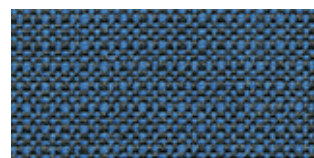
4601



4411



4722



4122

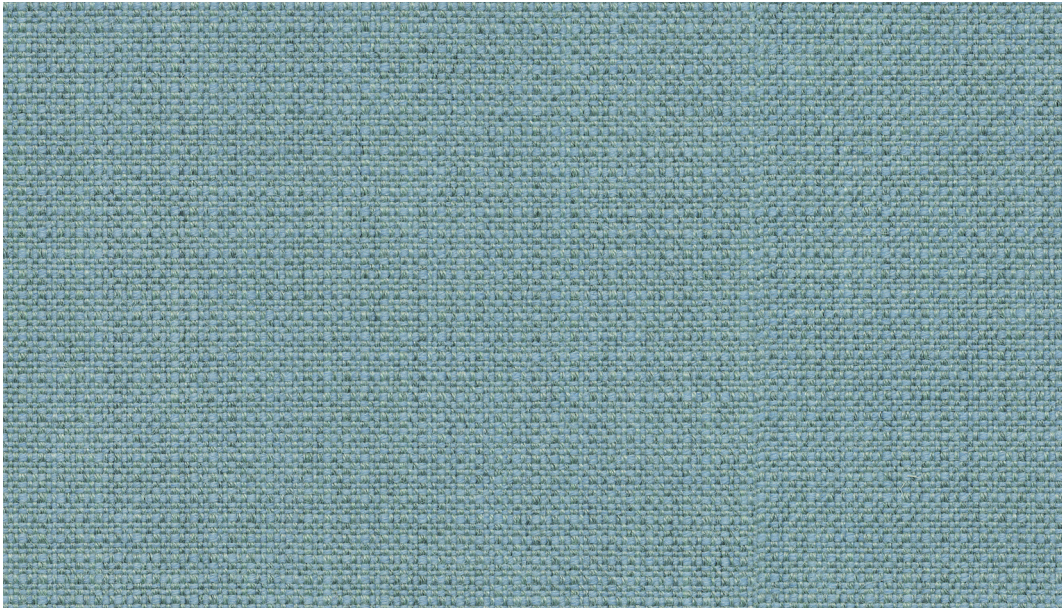


4125

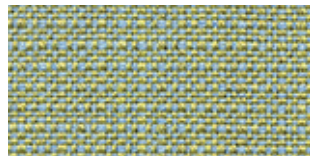


4741

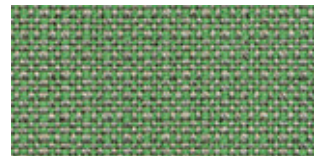




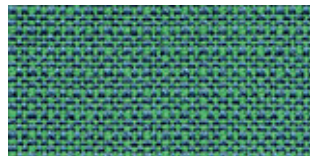
4751



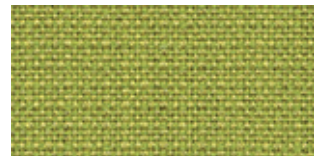
4201



4117



4605



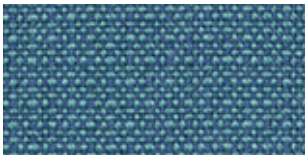
4203



4751



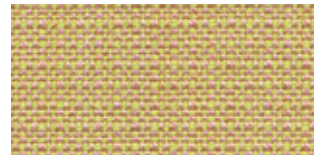
4211



4602



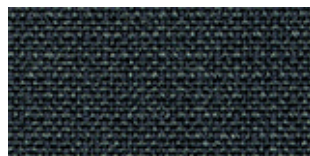
4752



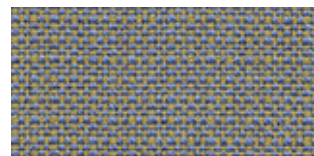
4771



4723




4761



4603

# CRISP

Design no.	2424
Application	contract · soft seating
Composition	93% New Zealand wool · 7% polyamide
Weight	460 g/lm (14.84 oz/lin.yd.)
Width	140 cm (55 inches)
Abrasion	200,000 Martindale · 200,000 Martindale(US)
Pilling	4-5
Light fastness	5-7
Rubbing fastness	4-5/4-5
Maintenance	dry cleaning
Flammability	BS 5852 0&1 · EN 1021-1&2 · UNI 9175 C-1 IM · CA TB 117-2013 · IMO MSC 307 (88) An.1 P.8 · MED IMO · Önorm A3800 / B3825 Contains no flame retardant chemicals
US ACT	
Design/colours	Mette Krebs Petersen



Subject to changes and colour differences  
Will pass other standards – for complete specifications: gabriel.dk